

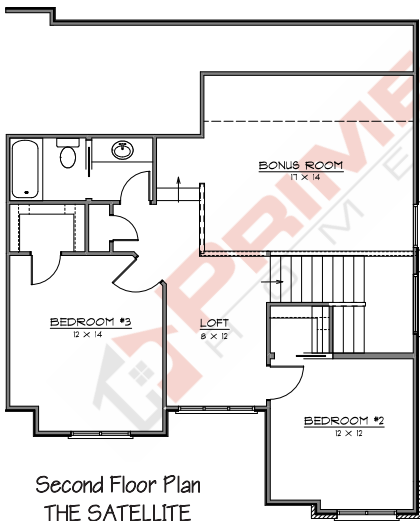


The Satellite



- 4791 total sq. footage with finished daylight basement and water views
- 4 bedrooms, 4 bathrooms
- Large front and rear covered porch
- Oversized 3 car garage
- Amazing Anderson windows and patio doors
- Beautiful master bathroom with dual closets and custom shower
- Impressive kitchen with large island , butler pantry and GE Café appliances
- Incredible laundry room with farm sink, cabinets and lockers
- Hard surface countertops throughout home
- 4 zoned 2 stage HVAC with power vent water heater and battery back up
- Northwest Allen County Schools

primehomes-fw.com
260.437.4866



Second Floor Plan
 THE SATELLITE
 LIVING 925 SF

